

HOW TO MAKE A PROJECTION



from Windows or Mac computer

Install the WePresent software for full functionality, or start the software directly from the WePresent USB stick.

Installation from USB stick

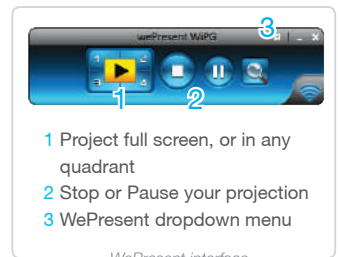
- Plug WePresent USB token into your computer and browse drive for the *Windows or Mac installer* folder.
- Start the software installation file.
- After installation, connect your device to the wifi signal from the WiPG and start the software.*

Installation from download

- Connect your device to the wifi signal from the WiPG.
- Type the IP address from the WiPG in your browser window.
- Click *Download*, and download the software client for your system.
- Start the software installation file.
- After installation, start the software.*

Plug & Show (no installation)

- Plug & Show is for Windows only!
- Connect your device to the wifi signal from the WiPG.
- Plug WePresent USB token into your Windows computer and run the auto-play feature from the USB token (WePresent WiPG.exe).



- 1 Project full screen, or in any quadrant
- 2 Stop or Pause your projection
- 3 WePresent dropdown menu

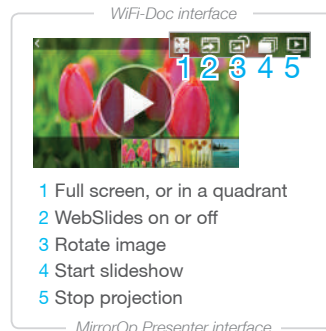
— WePresent interface —



from Android or Apple

Use WiFi-Doc application for projecting presentation files (Powerpoint, Word, Excel, PDF and images)

- Download the free *WiFi-Doc (bundle version)* application from Google Play or the Apple App Store.
- Connect your device to the wifi signal from the WiPG.
- Start WiFi-Doc* and browse for your file (or locate file in file browser and select 'open with WiFi-Doc').
- Select the WiPG device on which you want to make your projection.



- 1 Full screen, or in a quadrant
- 2 WebSlides on or off
- 3 Rotate image
- 4 Start slideshow
- 5 Stop projection

— MirrorOp Presenter interface —

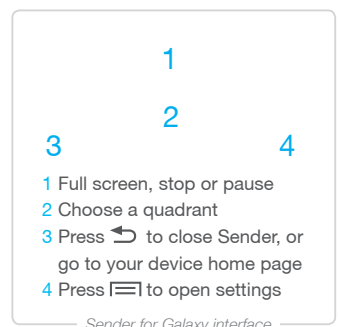


from Samsung Galaxy

Use MirrorOp Sender for Galaxy to mirror the full screen from your mobile device

- Download the free *MirrorOp Sender for Galaxy* App from Google Play.
- Connect your device to the wifi signal from the WiPG.
- Open Sender for Galaxy* and your screen mirroring will start.
- Select the WiPG device on which you want to make your projection.

Only on WiPG-1000 with firmware v1.2.0.1 or higher
Only on WiPG-1500 with firmware v1.0.3.1 or higher



- 1 Full screen, stop or pause
- 2 Choose a quadrant
- 3 Press to close Sender, or go to your device home page
- 4 Press to open settings

— Sender for Galaxy interface —

* When starting the WePresent software, the MirrorOp Presenter or Sender for Galaxy, make sure you are connected to the correct wifi signal (SSID). Please also mind entering the on-screen login code when prompted to. This code can be seen in the top right of the screen.

Useful tools during your presentation

WEBSLIDES

Share slides with your audience

- During a projection select *Enable BrowserSlides* in the WePresent software dropdown menu or *Enable WebSlides* in the WiFi-Doc application.
- Tell your audience to connect their wifi device, to the WiPG wifi signal and let them enter the IP address in their web browser.
- Now let them press *BrowserSlides* and they will receive screenshots from current presentation. They can save these slides on their own device.

SIDEPAD

Your Android / Apple as a remote

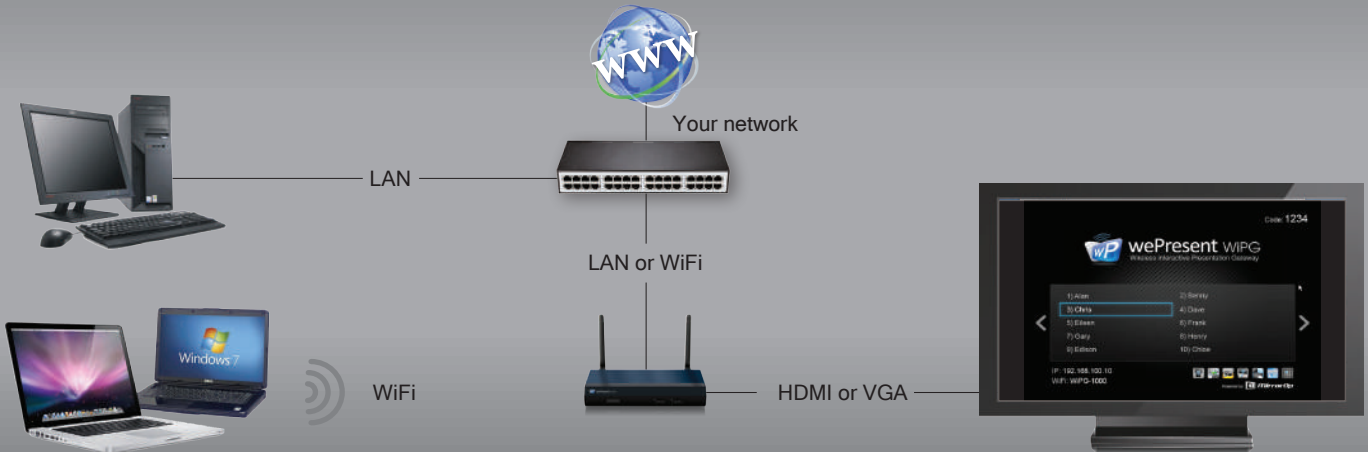
- Download the free *SidePad Receiver* application from Google Play or the Apple App Store.
- Connect to the wifi signal from the WiPG and start SidePad Receiver.
- Now, on the projecting Win / Mac computer, select *Launch SidePad* from the WePresent software dropdown menu.
- Control your projecting Win / Mac computer on your mobile device.

CONFERENCE CONTROL

Moderator controls who is presenting

- Connect to the wifi signal from the WiPG.
- Type the IP address from the WiPG in your browser window.
- Click *Conference Control* and type the password (by default: *moderator*), to log in as moderator.
- Now only the moderator can decide which user is projected on the screen, or in which quadrant.

NETWORK SETUP (optional)



WIRED NETWORK SETUP (recommended)

Connect WiPG to your network by LAN cable

- Connect the WiPG to your network by LAN cable
- The WiPG will receive a new IP address from your network.

The wired connection to your network will give internet and network access to all users connected to WiPG. It will also allow access to the WiPG from all network computers.

WIRELESS NETWORK SETUP

Connect WiPG to your network by WiFi

- When connected to the WiPG type the IP address from the WiPG in your browser window to go to the device page.
- Click **Admin** and type the password (by default: *admin*) to log in.
- Select **Network setup**.
- At **Connect to existing AP** select **Enable**, then click **Scan**.
- Now select your network Access Point from the dropdown list and, if needed, enter your network password where it says **Key**. When done, click **Apply** and the device will restart.
- If connected successfully, the WiPG will receive a new IP address from your network.

When WiPG is set as a wireless AP Client, we recommend to use this only as a source of internet access to WiPG users.

When any network settings, or device IP address has been changed, sometimes you have to make your operating system 'forget' the previous wireless connection and make a new connection.

USEFULL TOOLS

For the WiPG in your network environment

SSID: Change the name of the WiFi signal from your WiPG.

Channel: Change the WiFi channel that your WiPG is broadcasting on.

Encryption: Encrypt the WiFi signal from your WiPG with your own password encryption (WEP / WPA / WPA2).

Channel bandwidth: Limit the bandwidth from the WiPG's WiFi channel.

Gatekeeper: Limit access to your network, or give Internet only.

SNMP Manager: On the WePresent USB token in the Utility folder, you will find the SNMP Manager software. With this software it is possible to set up multiple WiPG's on the same network, from one location.

wePresent Admin > Network Setup

IP Setup: Obtain an IP address automatically (selected) / Use the following IP address. IP Address: 192.168.100.10, Subnet Mask: 255.255.255.0, Default Gateway: 192.168.100.10, DNS Server: 192.168.100.10.

DHCP Server Setup: Auto (selected) / Disable. Start IP: 192.168.100.11, End IP: 192.168.100.254, Subnet Mask: 255.255.255.0, Default Gateway: 192.168.100.10, DNS Server: 192.168.100.10.

Wireless Setup: Wireless LAN: Enable (selected) / Disable. SSID: WIPG-1500_P2M, SSID Broadcast: Enable (selected) / Disable, Channel: Auto, Encryption: Disable, Key: [empty], Channel Bandwidth: 20MHz / Auto (selected).

Ap Client: Connect to Existing AP: Existing AP SSID: MyNetwork_UPC, Enable / Disable (selected), Encryption: Disable, Key: [empty].

Host Name and Domain Name: Host Name (SSID): WIPG-1500_P2M, Domain Name: [empty].

GateKeeper: All Pass / All Block / Internet Only (selected). Enable / Disable (selected).

SNMP V3: User Name: admin, Auth Password (MD5): [empty], Priv Password (DES): [empty], Trap: 0.0.0.0.

Buttons: Apply, Cancel

WiPG network setup

For more information, visit: www.wepresent1000.com